

Viper

Survey & Crew Transfer Vessel



TECHNICAL SPECIFICATION

General

Type of Vessel: Safety & Crew Transfer Vessel
Built: McTay Marine, 1992
Certification: MCA Workboat Code Cat 2/60
10 passengers

Dimensions

Length: 15.50m
Beam: 4.65m
Draft: 1.45m
Displacement: 37.88 tonnes

Performance

Free Running Speed: 16 knots

Propulsion

Main Engines: 2 x Volvo Penta TAMD 122AHD
Total Power: 400BHP @ 1900rpm
Gearboxes: 2 x twin disc
Propulsion: 2 x 4 blade fixed pitch propellers

Auxiliary Equipment

Generator: Kohler 9kW 9EKOZD
Electrical system: 24 V DC / 220V shore connection

Deck Equipment

Pilot Rail: 50mm Aluminium
MOB Recovery: Stern platform
Manual Hoist
330lbs SWL
Anchor: 1 x 30kg High Holding Power

Tank Capacities

Fuel Oil: 2 x 1200 litres
Fresh Water: 250 litres

Accommodation

Wheelhouse with seating for 2 plus day bench. Accommodation with 8 suspension seats, galley and WC.

Navigational Equipment

Radar: Furuno RDP-118
Echosounder: Seafarer 501
VHF (x2): Sailor RT2048
Icom M411
Handheld VHF: Icom IC-M1
Compass: Posieidon Rigel
Searchlight: Francis 24V
AIS: Simrad AI50
GPS: Furuno GP-1640F

www.carmettugs.co.uk

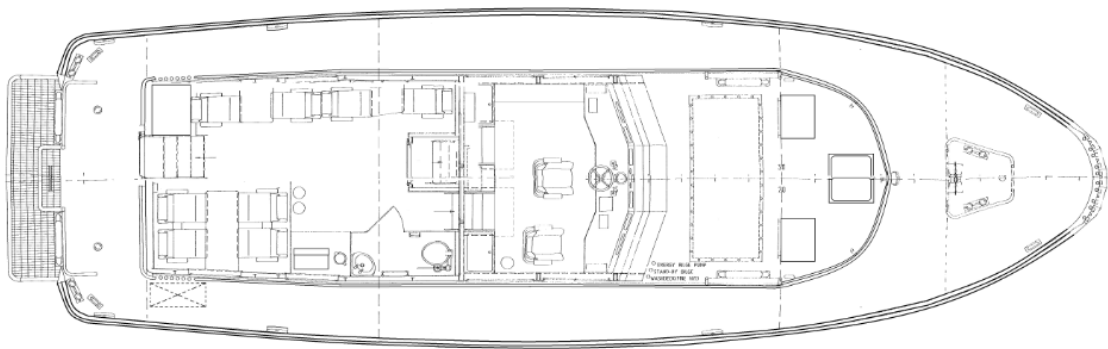
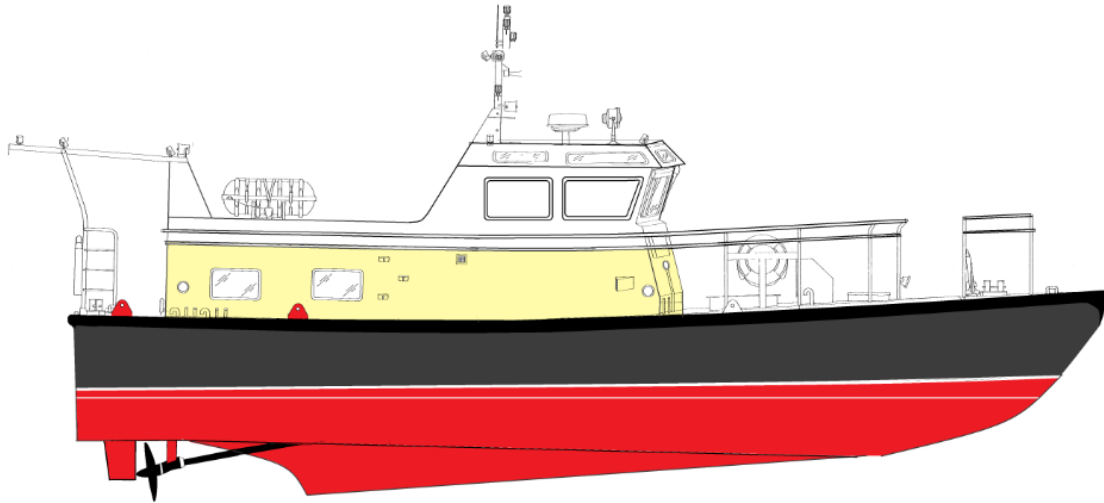
Riverbank Road, Bromborough, Wirral, CH62 3JQ

phone: +44 (0) 1856 874725

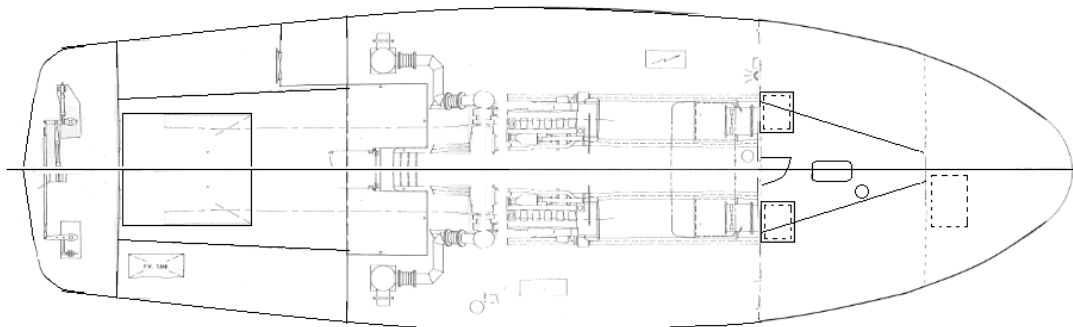
email: tugs@carmet.co.uk

Viper

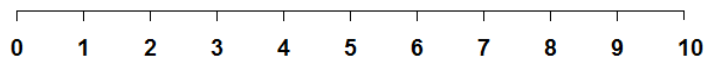
Survey & Crew Transfer Vessel



Main Deck



Below Deck



www.carmettugs.co.uk

Riverbank Road, Bromborough, Wirral, CH62 3JQ

phone: +44 (0) 1856 874725

email: tugs@carmet.co.uk