

# Vixen

## Multi-Role Vessel



### TECHNICAL SPECIFICATION

#### General

<b>Type of Vessel:</b>	Multi-Role Vessel
<b>Built:</b>	Meercat Workboats, 2011
<b>Certification:</b>	MCA Workboat Code Cat 2/60

#### Dimensions

<b>Length:</b>	14.50m
<b>Beam:</b>	4.85m
<b>Draft:</b>	0.85m
<b>Displacement:</b>	29 tonnes

#### Performance

<b>Free Running Speed:</b>	8 knots
<b>Bollard Pull:</b>	3 tonnes
<b>Deck Carrying Capacity:</b>	25 tonnes

#### Propulsion

<b>Main Engines:</b>	2 x Doosan L136
<b>Total Power:</b>	320HP @ 2200rpm
<b>Gearboxes:</b>	Dong-I DMT 90A-H 2.25:1
<b>Propulsion:</b>	2 x 700mm 5 blade fixed pitch props

#### Auxiliary Equipment

<b>Generator:</b>	Westerbeke 9.2KW 50 Hz
<b>Fuel Transfer Pumps:</b>	100lpm
<b>Electrical system:</b>	24 V DC / 220V shore connection

#### Deck Equipment

<b>Hydraulic Crane:</b>	Palfinger K11001(M)B 5.5t/m
<b>Deck Winch:</b>	Brevini 2 tonnes
<b>Capstan:</b>	1.5 t SWL
<b>Spud Legs (x2):</b>	508mm x 16mm guides
Tow Post	
Removable Bow Boards	

#### Tank Capacities

<b>Fuel Bunkers:</b>	2 x 1500 litres
<b>Fresh Water:</b>	215 litres

#### Accommodation

Wheelhouse with a bench seat. Galley unit including a sink, fridge and cooking facilities. WC below deck.

#### Navigational Equipment

<b>Radar/chart plotter:</b>	Raymarine C80 c/w
<b>Echosounder:</b>	Raystar 125 ST40
<b>VHF:</b>	2 x Icom M411
<b>Handheld VHF:</b>	Icom IC-M1
<b>Compass:</b>	Plastimo Olympic
<b>Searchlight:</b>	ITT Jabsco
<b>AIS:</b>	Raymarine AIS650

[www.carmettugs.co.uk](http://www.carmettugs.co.uk)

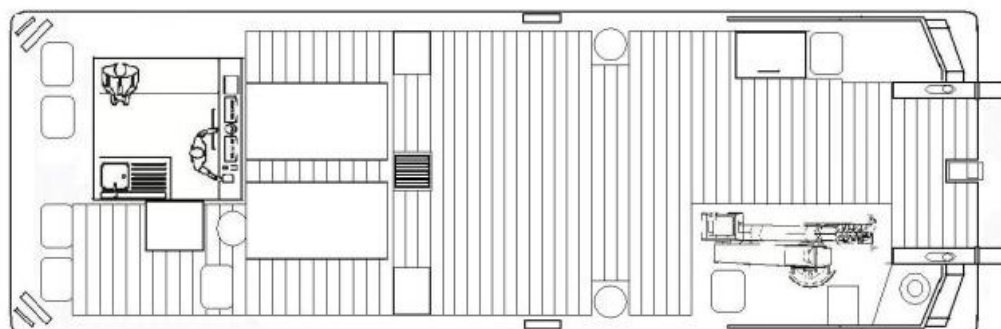
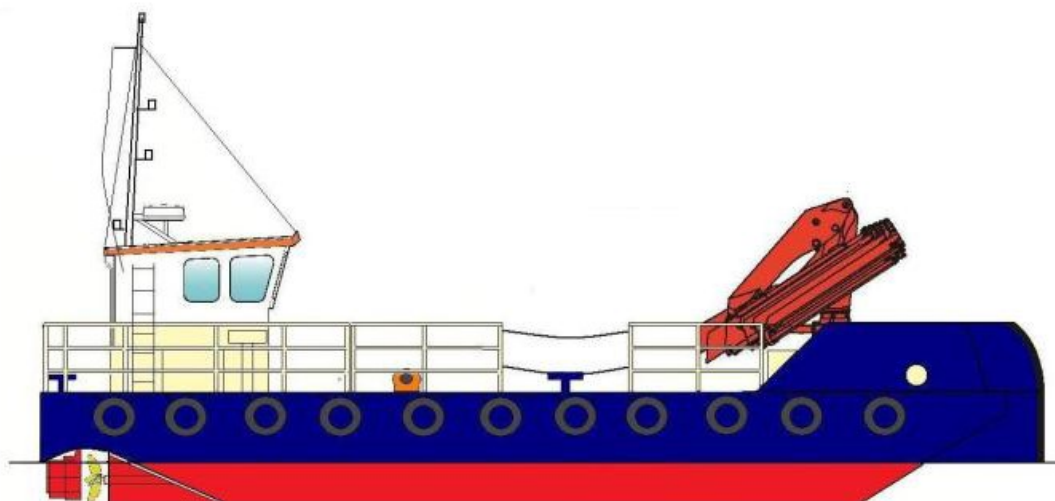
Riverbank Road, Bromborough, Wirral, CH62 3JQ

phone: +44 (0) 1856 874725

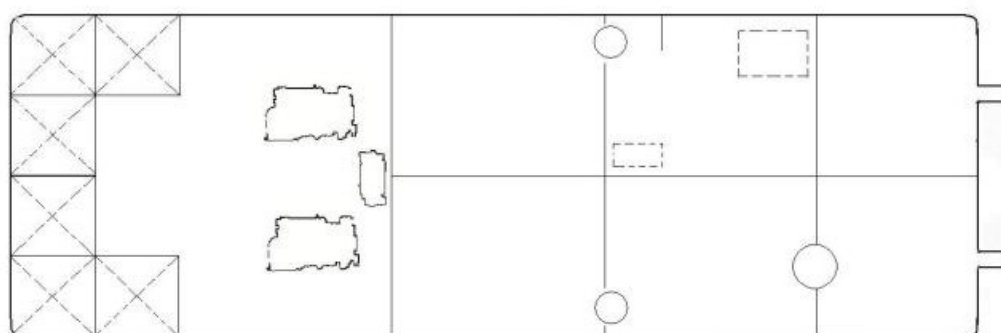
email: [tugs@carmet.co.uk](mailto:tugs@carmet.co.uk)

# Vixen

Multi-Role Vessel



Main Deck



Below Deck

[www.carmettugs.co.uk](http://www.carmettugs.co.uk)

Riverbank Road, Bromborough, Wirral, CH62 3JQ

phone: +44 (0) 1856 874725

email: [tugs@carmet.co.uk](mailto:tugs@carmet.co.uk)