

Vikki

Road Transportable Workboat



TECHNICAL SPECIFICATION

General

Type of Vessel: Road Transportable
Single Screw Workboat
Built: 2000, Newhaven Maine Projects
Classification: MCA Workboat Cat 3/20

Dimensions

Length: 9.00m
Beam: 3.00m
Draft: 1.1m
Gross Weight: 7.5t

Performance

Free Running Speed: 9 knots
Bollard Pull: 1.0 tonnes

Propulsion

Main Engine: 6 cylinder Ford Otosan
Keel cooled
Total Power: 130hp
Gearbox: Newage prm model 30202 2:1

Tank Capacities

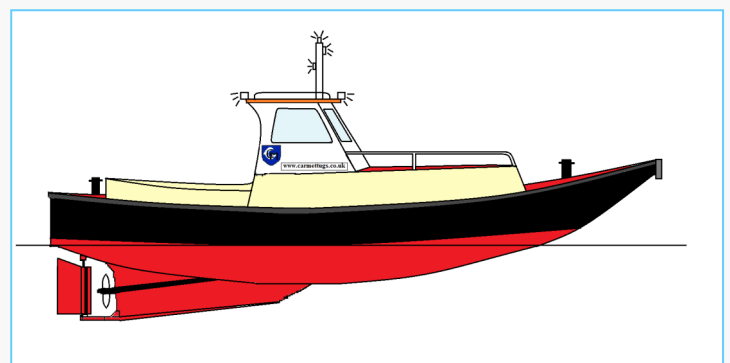
Fuel Oil: 500l

Deck Equipment

Deck floodlights fore and aft
Full navigation lights
Full all round fendering
Tow post
Anchor & anchor chain
Man overboard recovery system

Navigational Equipment

Echosounder: NASA Marine
Compass:
VHF: Cobra
Handheld VHF: Icom IC-M1



www.carmettugs.co.uk

Riverbank Road, Bromborough, Wirral, CH62 3JQ

phone: +44 (0) 1856 874725

email: tugs@carmet.co.uk

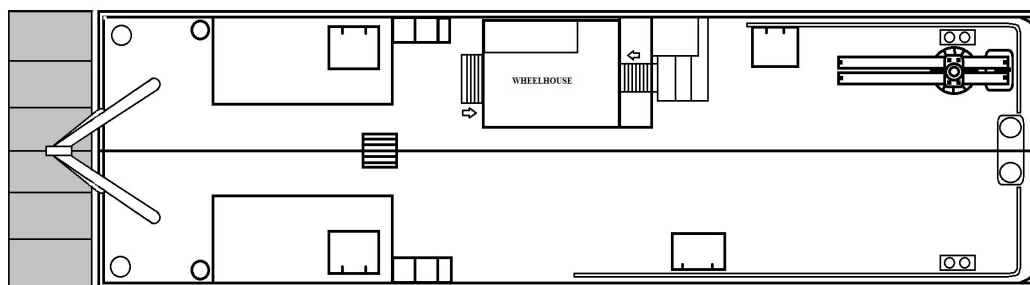
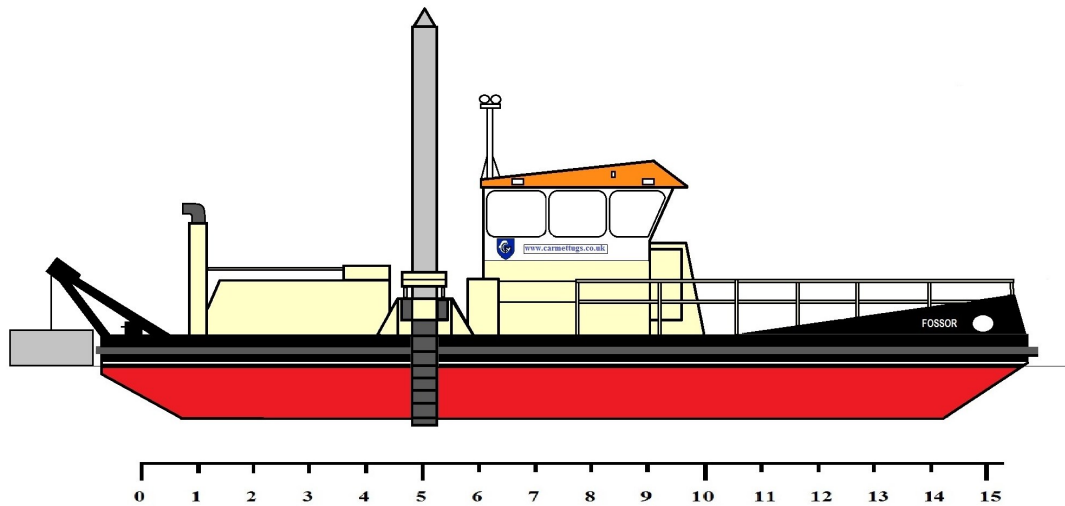
Fossor

Multi-Role Vessel

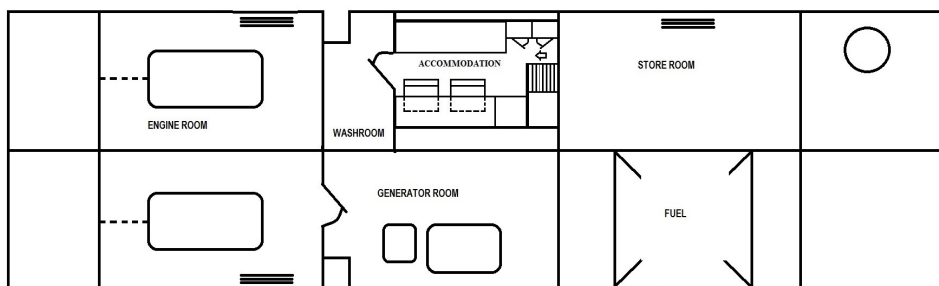


Additional Options

- 5m x 1.2m x 1.8m Plough
- SWP deployment platform



DECK LEVEL



BELOW DECK

www.carmettugs.co.uk

Riverbank Road, Bromborough, Wirral, CH62 3JQ

phone: +44 (0) 1856 874725

email: tugs@carmet.co.uk