

Viper

Survey & Crew Transfer Vessel



TECHNICAL SPECIFICATION

General

| | |
|------------------------|---|
| Type of Vessel: | Safety & Crew Transfer Vessel |
| Built | McTay Marine, 1992 |
| Certification: | MCA Workboat Code Cat 2/60 10 passengers |

Dimensions

| | |
|----------------------|--------------|
| Length: | 15.50m |
| Beam: | 4.65m |
| Draft: | 1.45m |
| Displacement: | 37.88 tonnes |

Performance

| | |
|----------------------------|----------|
| Free Running Speed: | 16 knots |
|----------------------------|----------|

Propulsion

| | |
|----------------------|------------------------------------|
| Main Engines: | 2 x Volvo Penta TAMD 122AHD |
| Total Power: | 400BHP @ 1900rpm |
| Gearboxes: | 2 x twin disc |
| Propulsion: | 2 x 4 blade fixed pitch propellers |

Auxiliary Equipment

| | |
|---------------------------|---------------------------------|
| Generator: | Kohler 9kW 9EKOZD |
| Electrical system: | 24 V DC / 220V shore connection |

Deck Equipment

| | |
|----------------------|--|
| Pilot Rail: | 50mm Aluminium |
| MOB Recovery: | Stern platform Manual Hoist 330lbs SWL |
| Anchor: | 1 x 30kg High Holding Power |

Tank Capacities

| | |
|---------------------|-----------------|
| Fuel Oil: | 2 x 1200 litres |
| Fresh Water: | 250 litres |

Accommodation

Wheelhouse with seating for 2 plus day bench. Accommodation with 8 suspension seats, galley and WC.

Navigational Equipment

| | |
|----------------------|----------------------------|
| Radar | Furuno RDP-118 |
| Echosounder: | Seafarer 501 |
| VHF (x2): | Sailor RT2048 Icom M411 |
| Handheld VHF: | Icom IC-M1 |
| Compass: | Posieidon Rigel |
| Searchlight: | Francis 24V |
| AIS: | Simrad AI50 |
| GPS: | Furuno GP-1640F |

www.carmettugs.co.uk

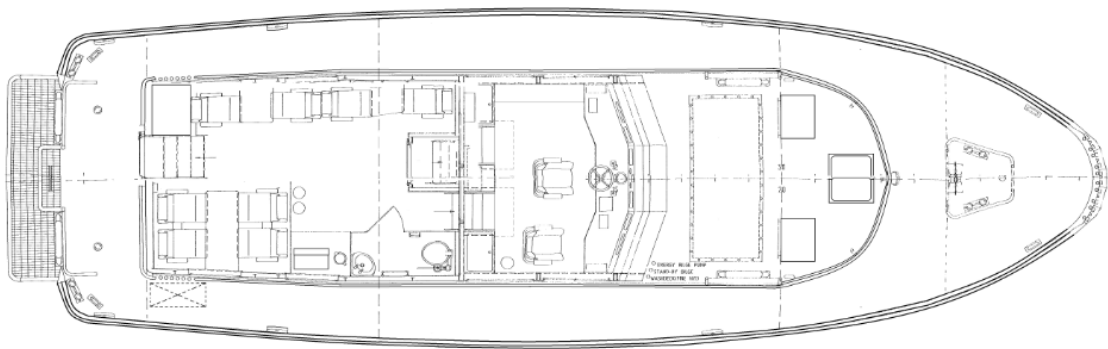
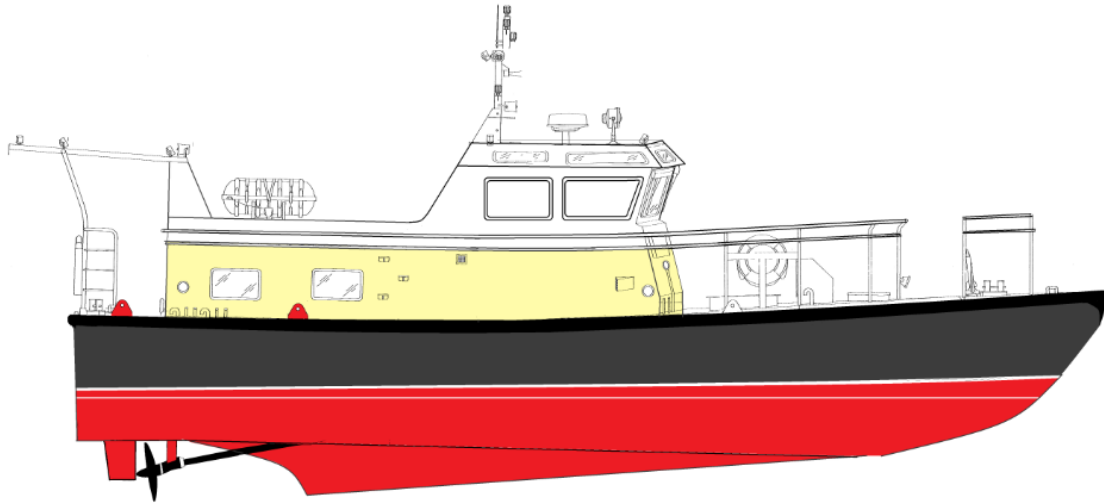
Riverbank Road, Bromborough, Wirral, CH62 3JQ

phone: +44 (0) 1856 874725

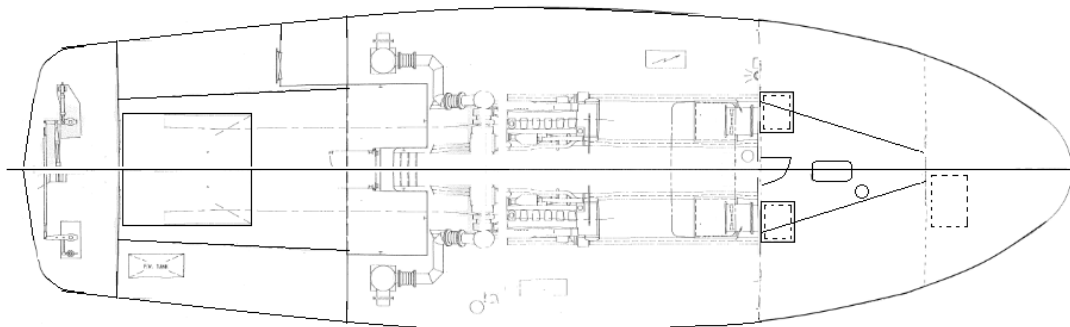
email: tugs@carmet.co.uk

Viper

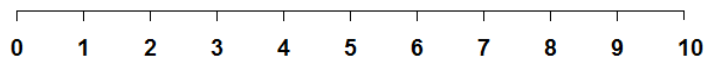
Survey & Crew Transfer Vessel



Main Deck



Below Deck



www.carmettugs.co.uk

Riverbank Road, Bromborough, Wirral, CH62 3JQ

phone: +44 (0) 1856 874725

email: tugs@carmet.co.uk