

Vixen

Multi-Role Vessel



TECHNICAL SPECIFICATION

General

Type of Vessel:	Multi-Role Vessel
Built:	Meercat Workboats, 2011
Certification:	MCA Workboat Code Cat 2/60

Dimensions

Length:	14.50m
Beam:	4.85m
Draft:	0.85m
Displacement:	29 tonnes

Performance

Free Running Speed:	8 knots
Bollard Pull:	3 tonnes
Deck Carrying Capacity:	25 tonnes

Propulsion

Main Engines:	2 x Doosan L136
Total Power:	320HP @ 2200rpm
Gearboxes:	Dong-I DMT 90A-H 2.25:1
Propulsion:	2 x 700mm 5 blade fixed pitch props

Auxiliary Equipment

Generator:	Westerbeke 9.2KW 50 Hz
Fuel Transfer Pumps:	100lpm
Electrical system:	24 V DC / 220V shore connection

Deck Equipment

Hydraulic Crane:	Palfinger K11001(M)B 5.5t/m
Deck Winch:	Brevini 2 tonnes
Capstan:	1.5 t SWL
Spud Legs (x2):	508mm x 16mm guides
Tow Post	
Removable Bow Boards	

Tank Capacities

Fuel Bunkers:	2 x 1500 litres
Fresh Water:	215 litres

Accommodation

Wheelhouse with a bench seat. Galley unit including a sink, fridge and cooking facilities. WC below deck.

Navigational Equipment

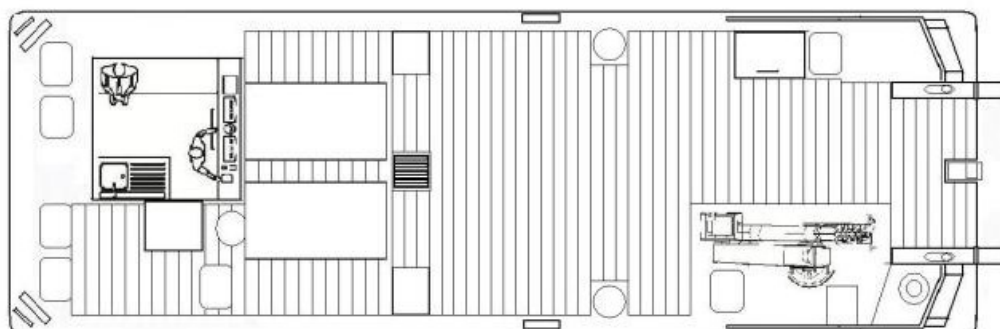
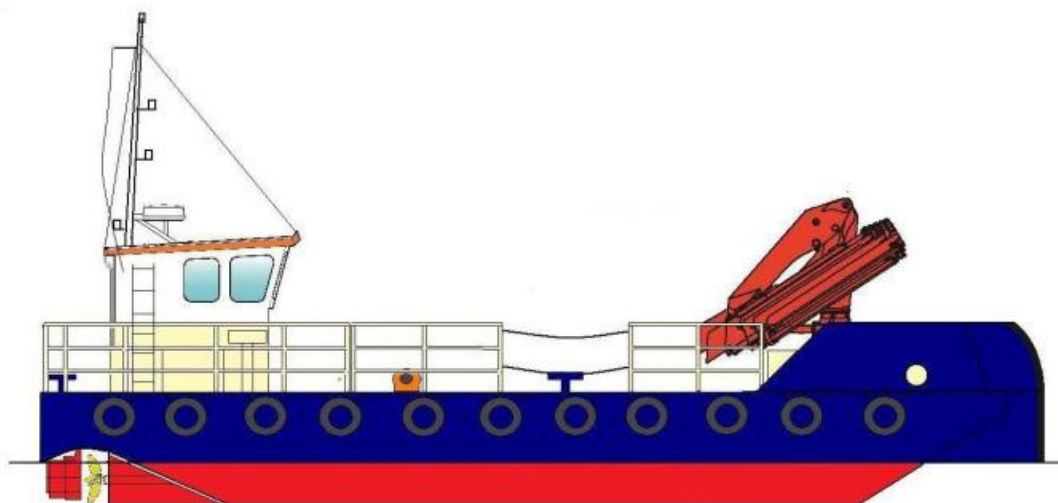
Radar/chart plotter:	Raymarine C80 c/w
Echosounder:	Raystar 125 ST40
VHF:	2 x Icom M411
Handheld VHF:	Icom IC-M1
Compass:	Plastimo Olympic
Searchlight:	ITT Jabsco
AIS:	Raymarine AIS650

www.carmettugs.co.uk

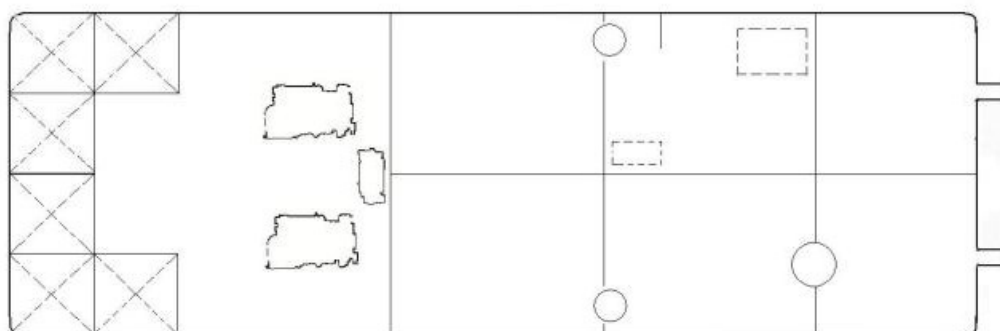
Riverbank Road, Bromborough, Wirral, CH62 3JQ

phone: +44 (0) 151 327 8018

email: tugs@carmet.co.uk



Main Deck



Below Deck