



### TECHNICAL SPECIFICATION

#### General

**Type of Vessel:** Flat Top Pontoon  
**Classification:** MCA Workboat Cat 2/60

#### Dimensions

**Length:** 22.5m  
**Beam:** 13.7m  
**Depth:** 2.75m  
**Draft Light:** 0.6m  
**Draft Loaded:** 2.0m  
**Deck Load:** 6t per m2  
**DWT:** 532t  
**Lightship Displacement:** 114t

#### Deck Equipment

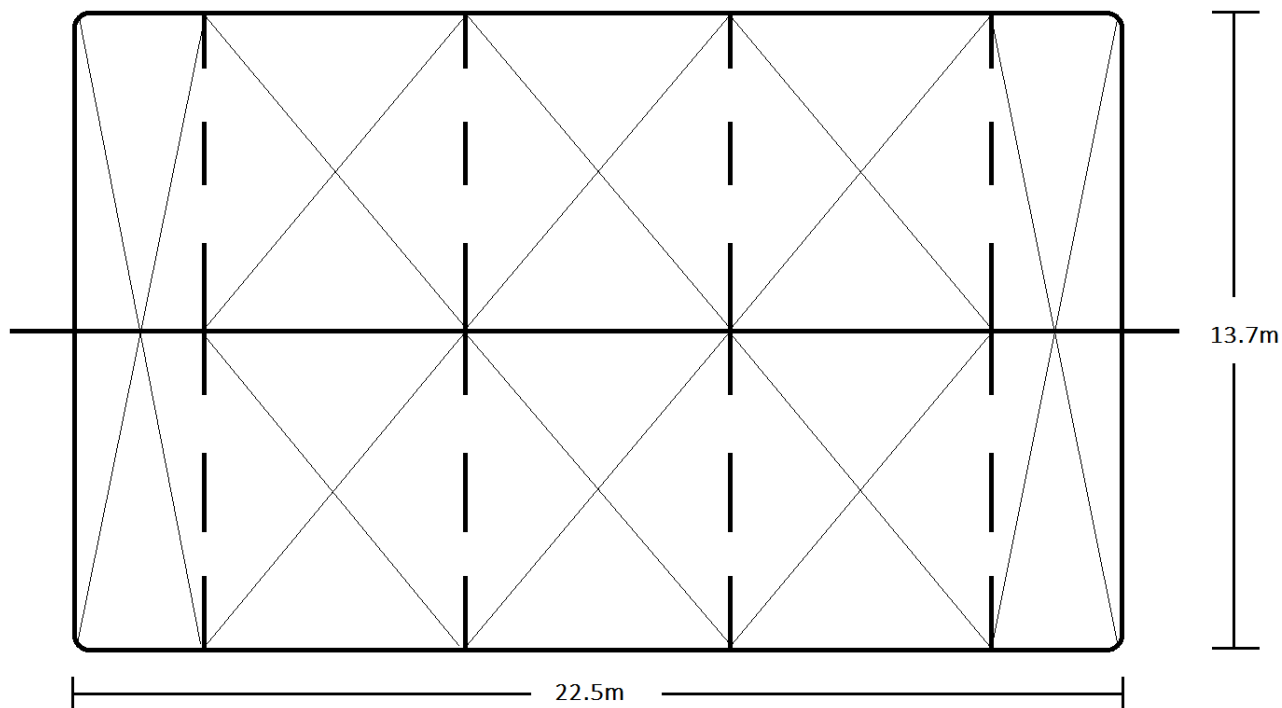
Hydraulic Mooring Winches  
Hand Rails

#### **Optional:**

Roro Ramp:  
3.45m Max Width  
Lighting  
Generators  
Cabins and Welfare Units  
Deck Protection

# Vim

Flat Top Barge



[www.carmettugs.co.uk](http://www.carmettugs.co.uk)

Riverbank Road, Bromborough, Wirral, CH62 3JQ

phone: +44 (0) 151 327 8018

email: [tugs@carmet.co.uk](mailto:tugs@carmet.co.uk)