



Vixen

Multi-role Vessel



General

Type of Vessel:	Multi-Role Vessel
Built:	Meercat Workboats, 2011
Certification:	MCA Workboat Code Cat 2/60

Dimensions

Length:	14.5 m
Beam:	4.85 m
Draft:	0.85 m
Displacement:	29 tonnes

Performance

Free Running Speed:	8.0 knots
Bollard Pull:	3.0 tonnes
Deck Carrying Capacity:	20 tonnes

Propulsion

Main Engines:	2 x Doosan L136
Total Power:	320HP @ 2200rpm
Gearbox:	Dong-I DMT 90A-H 2.25:1
Propulsion:	2 x 700mm 5 blade fixed pitch props

Auxiliary Equipment

Generator:	Westerbeke 9.2kw 50 Hz
Fuel Transfer Pumps:	100lpm
Electrical system:	24 V DC / 220 V shore connection

Tank Capacities

Fuel Bunkers:	3,000 litres
Fresh Water:	215 litres

Deck Equipment

Hydraulic Crane:	Palfinger K11001(M)B 5.5t/m
Deck Winch:	Brevini 3t pull
Capstan:	1.5t SWL
Spud Legs:	2 x 508mm x 16mm guides
Additional:	Welding set, burning equipment.

Accommodation

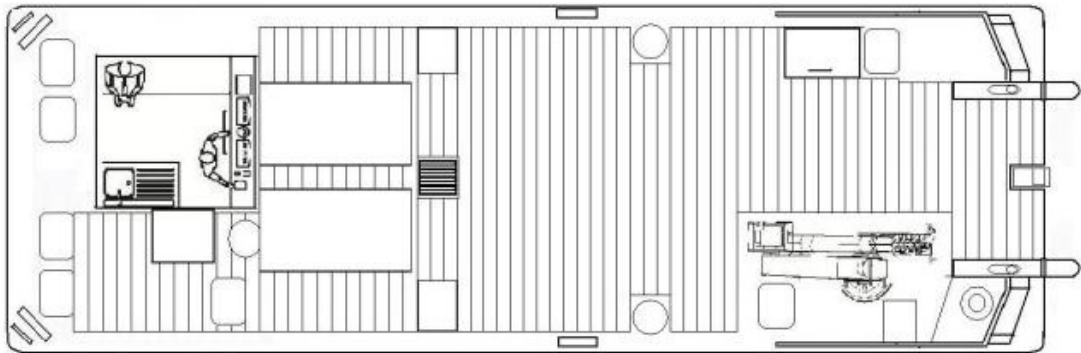
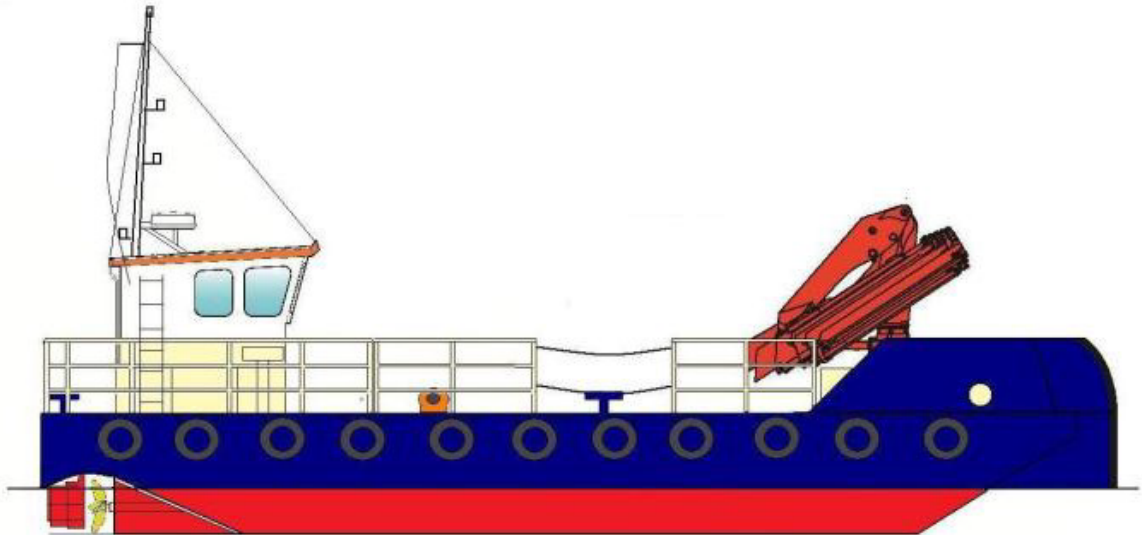
Wheelhouse with a bench seat. Galley unit including a sink, fridge and cooking facilities. WC below deck.

Navigational Equipment

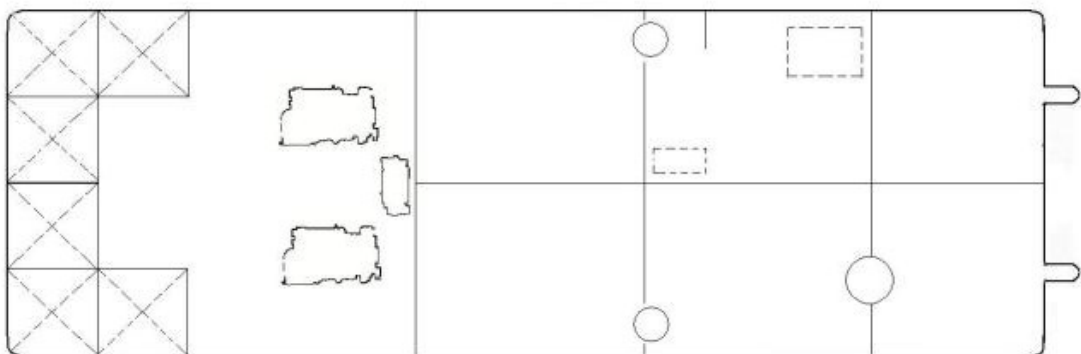
Radar/chart plotter:	Raymarine C80 c/w
Echosounder:	Raystar 125 ST40
VHF:	2 x Icom M411
Handheld VHF:	Icom IC-M1
Compass:	Plastimo Olympic
Searchlight:	ITT Jabsco
AIS:	Raymarine AIS650

Vixen

Multi-role Vessel



Main Deck



Below Deck