

# Vixen

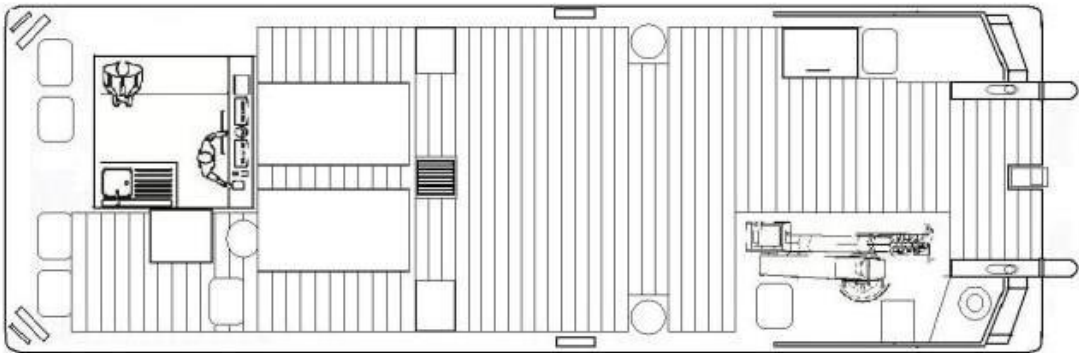
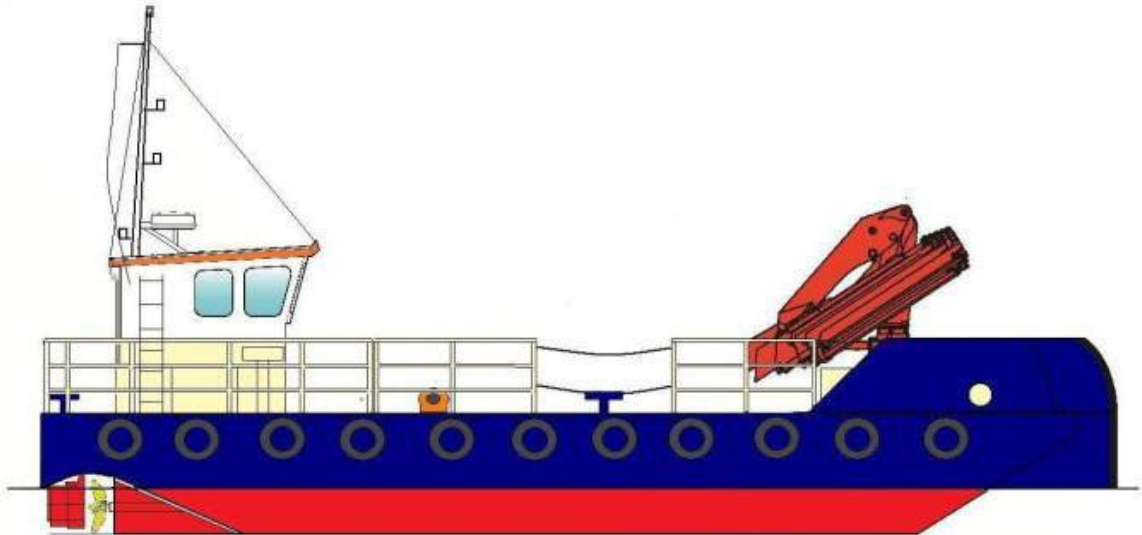
Multi-role Vessel



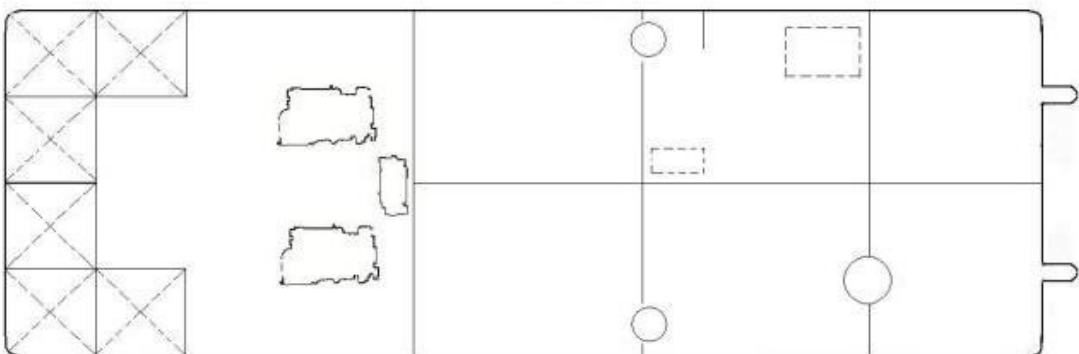
<b>Type of Vessel:</b>	Multi-Role Vessel
<b>Built:</b>	Meercat Workboats, 2011
<b>Classification:</b>	MCA Workboat Code Cat 2/60
<b>Length:</b>	14.5 m
<b>Beam:</b>	4.85 m
<b>Draft:</b>	0.85 m
<b>Free Running Speed:</b>	8.0 knots
<b>Bollard Pull:</b>	3.0 tonnes
<b>Deck Carrying Capacity:</b>	20 tonnes
<b>Main Engines:</b>	2 x Doosan L136
<b>Total Power:</b>	320HP @ 2200rpm
<b>Gearbox:</b>	Dong-I DMT 90A-H 2.25:1
<b>Propulsion:</b>	2 x 700mm 5 blade fixed pitch props
<b>Generator:</b>	Westerbeke 9.2kw 50 Hz
<b>Electrical system:</b>	24 V DC / 220 V shore connection
<b>Fuel Bunkers:</b>	3,000 litres
<b>Fresh Water:</b>	215 litres
<b>Deck Crane:</b>	Palfinger K11001(M)B 5.5t/m
<b>Deck Winch:</b>	Brevini 3t pull
<b>Capstan:</b>	1.5t SWL
<b>Spud Legs:</b>	2 x 508mm x 16mm guides
<b>Accommodation:</b>	Wheelhouse with a bench seat. Galley unit including a sink, fridge and cooking facilities. WC below deck.
<b>Navigation Equipment:</b>	Radar/chart plotter: Raymarine C80 c/w, Echosounder: Raystar 125 ST40, VHF: 2 x Icom M411, Handheld VHF: Icom IC-M1, Compass: Plastimo Olympic, Searchlight: ITT Jabsco, AIS: Raymarine AIS650

# Vixen

Multi-role Vessel



Main Deck



Below Deck