

CT Upton

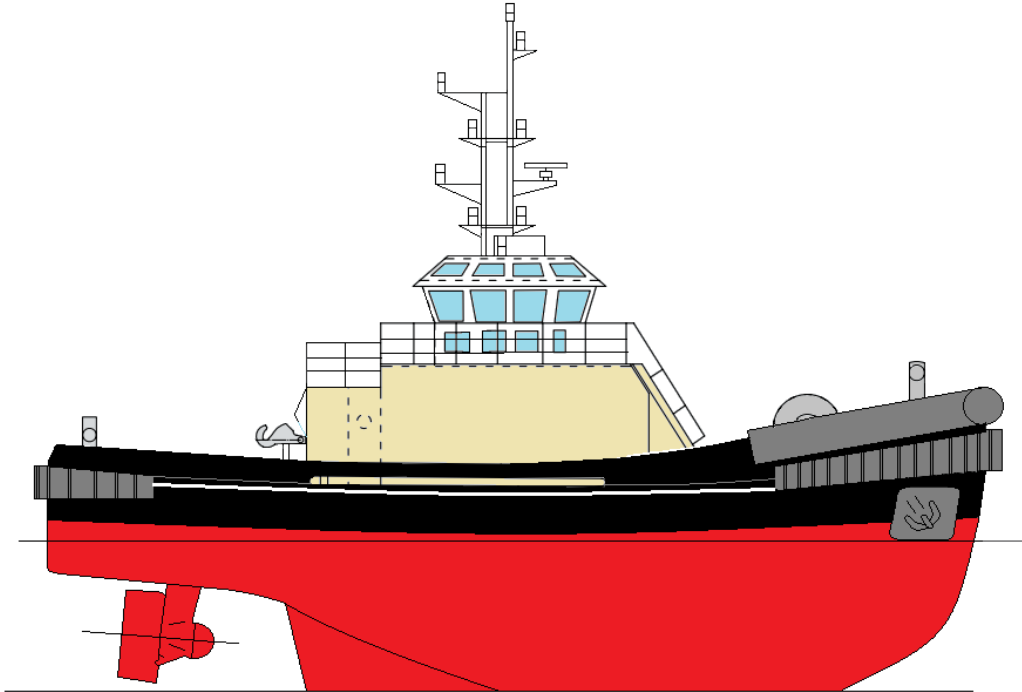
Harbour Tug



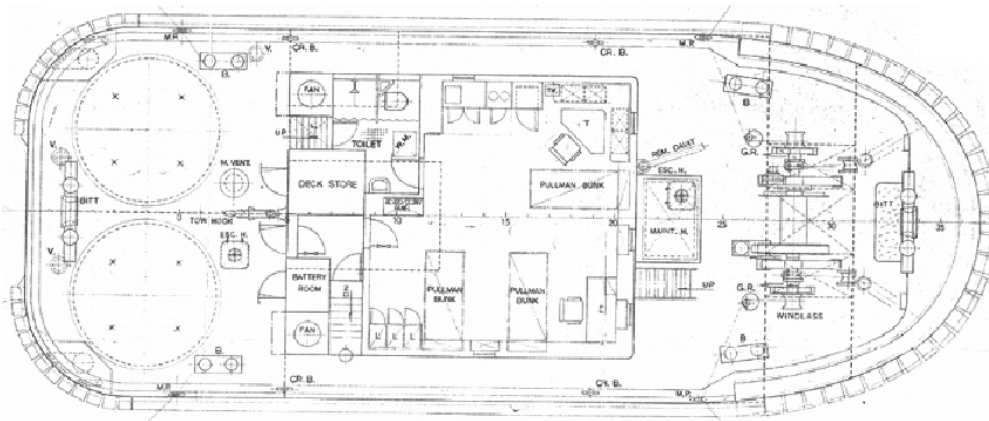
Type of Vessel:	Harbour Tug
Built:	Imamura Shipbuilding 1987
Classification:	Lloyds 100A1 Tug, MCA Workboat
Length:	22.60 m
Beam:	8.50 m
Draft:	3.50 m
gt:	131
Free Running Speed:	11.8 knots
Bollard Pull:	35 tonnes
Main Engines:	2 x Niigata 6L25CXE
Total Power:	2,600 bhp @ 720 RPM
Propulsion:	2 x Niigata ZP-2A Z-peller Azimuth Stern Drive Units with slipping clutches
Generator Sets:	2x 64 kw 380V, 50 hz alternators driven by Yanmar 6CHL-HTN diesel engines
Electrical System:	24v DC and 220/415V connections
Fuel Oil:	20 m3
Fresh Water:	35 m3
Towing Winch:	Electro-hydraulic single drum with double warping heads and double gypsies 60t BL
Towing Hook:	40t SWL
Accommodation:	4 Berths. Air Conditioned. Accommodation space is arranged in the deckhouse on the Main Deck level with toilet, shower and laundry facilities
Navigation Equipment:	2 x Sailor VHF, Radar: Furuno FR8030D, 12" x 48 miles, Echo Sounder: JRC Colour Echo sounder model, JFV 100M2, Fluxgate Compass, MD53 with dial repeater, Sestrel Minor overhead compass, AIS

CT Upton

Harbour Tug



MAIN DECK



BELOW DECK

