



VITAL | Workboat



**CARMET TUG COMPANY**

Canal Road, Eastham Locks,  
Wirral CH62 0BB

[www.carmettugs.co.uk](http://www.carmettugs.co.uk)

[tugs@carmet.co.uk](mailto:tugs@carmet.co.uk)

+44 (0)151 327 8018



**Vessel type:** Multi-role Workboat  
**Built:** McTay Marine Services, 2013  
**Classification:** MCA Workboat Code Cat 2/60

**Dimensions**

**Length:** 17.00 meters  
**Beam:** 7.00 meters  
**Draft:** 1.20 meters  
**Gross tonnage:** 47.60

**Performance**

**Bollard pull:** 6.50 tons  
**Speed:** 8.0 knots

**Propulsion**

**Main engines:** 2 x Doosan L196 TI  
**Total power:** 640 bhp  
**Gearboxes:** Dong 3.46 : 1  
**Propellers:** 2 x 5 blade fixed pitch props

**Auxiliary**

**Generator sets:** 1 x Cummins 6BT 5.9 DM 34kVA  
 1 x Beta Marine BV 3000 G3 46 kVA  
**Electrical system:** 415 V, with a 220 V Shore connection

**Tank Capacities**

**Fuel:** 12,400 litres  
**Water:** 1,000 litres

**Deck Layout**

**Deck crane:** BS680 M6 68 t/m  
**Deck winch:** Nippon Pusnes 10t SWL  
**Deck capacity:** 50 tonnes

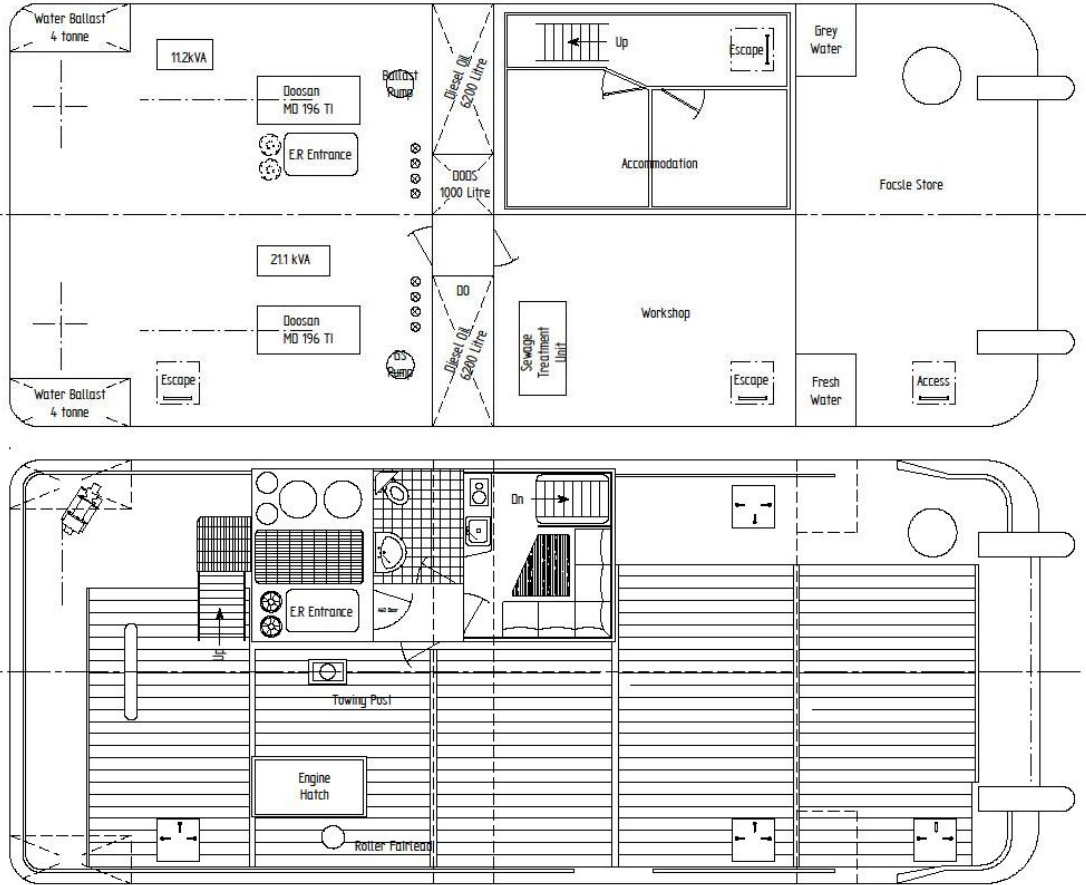
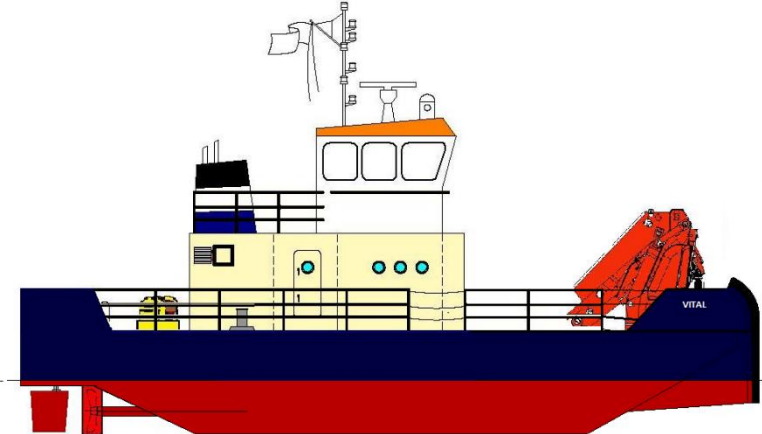
**Accommodation**

Wheelhouse with a bench seat. Galley / day room with sanitary space. Below deck 2 x 2 person cabins and Large workshop / store room.

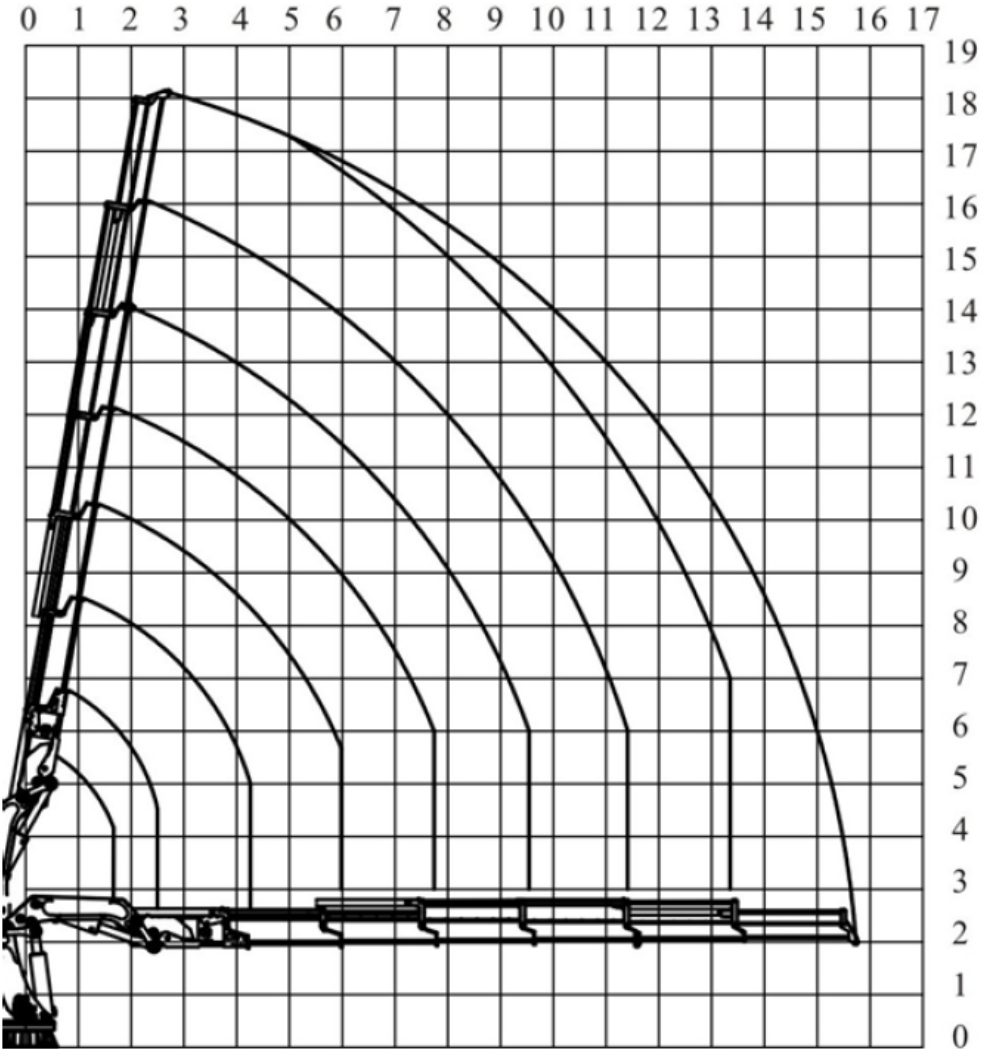
**Navigation**

Radar/chart plotter: Furuno NavNet 3D MFD12, Radar: Furuno DR5 4D, NavPilot: Furuno FAP 7001, GPS: Furuno GP37, Echosounder: Furuno LS-6100, VHF: 2 x Icom IC-M423, Handheld VHF: Icom IC-M23, Compass: Ritche, Searchlight: Stryler 3049R

# General Arrangement



# Crane Specifications



Outreach	2.55	4.26	5.98	7.74	9.54	11.41	13.35	15.60
Load	14.00	13.02	9.20	7.02	5.50	4.57	3.78	3.11