



VIXEN | Workboat



CARMET TUG COMPANY

Canal Road, Eastham Locks,
Wirral CH62 0BB

www.carmettugs.co.uk

tugs@carmet.co.uk

+44 (0)151 327 8018



Vessel type: Multi-role Workboat
Built: Meercat Workboats, 2011
Classification: MCA Workboat Code Cat 2/60

Dimensions

Length: 14.50 meters
Beam: 4.85 meters
Draft: 0.80 meters

Performance

Bollard pull: 3.0 tons
Speed: 7.0 knots

Propulsion

Main engines: 2 x Doosan L136
Total power: 320 bhp
Gearboxes: Dong-I DMT 90A-H 2.25:1
Propellers: 2 x 700mm 5 blade fixed pitch props

Auxiliary

Generator sets: Westerbeke 9.2kw 50 Hz
Electrical system: 24 V DC / 220 V shore connection

Tank Capacities

Fuel: 3,000 litres
Water: 215 litres

Deck Layout

Deck crane: (M)B 5.5t/m
Deck winch: Brevinin Hydraulic Winch 2.5t SWL
Capstan: 1.5t SWL
Spud legs: 2 x 508mm x 16mm guides
Deck capacity: 20 tonnes

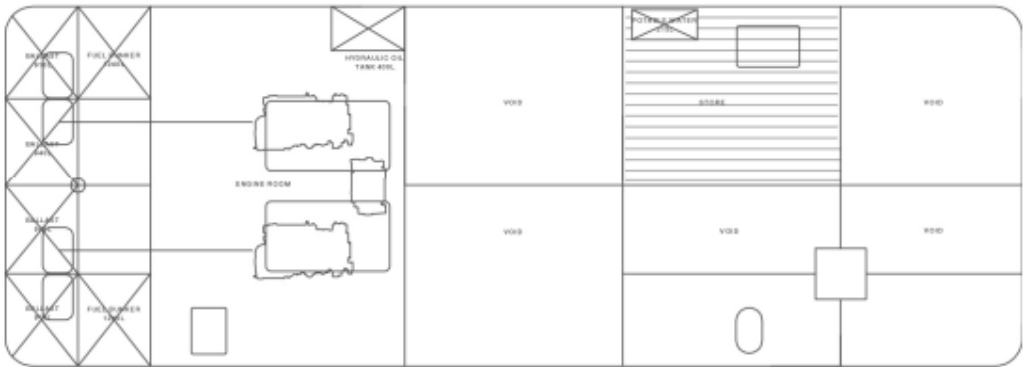
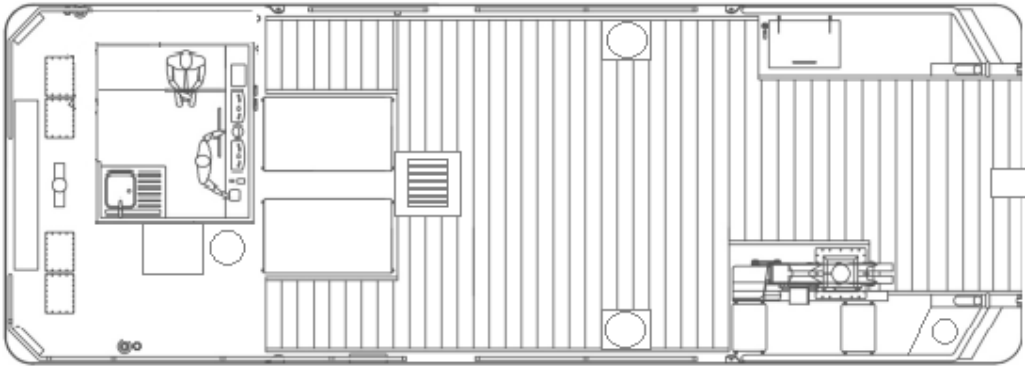
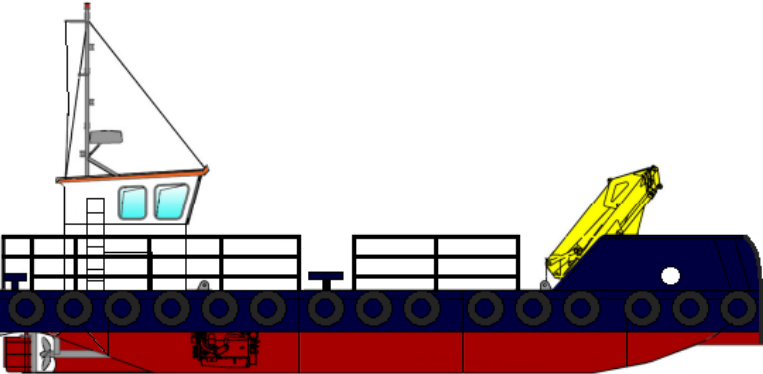
Accommodation

Wheelhouse with a bench seat. Galley unit including a sink, fridge and cooking facilities. WC below deck.

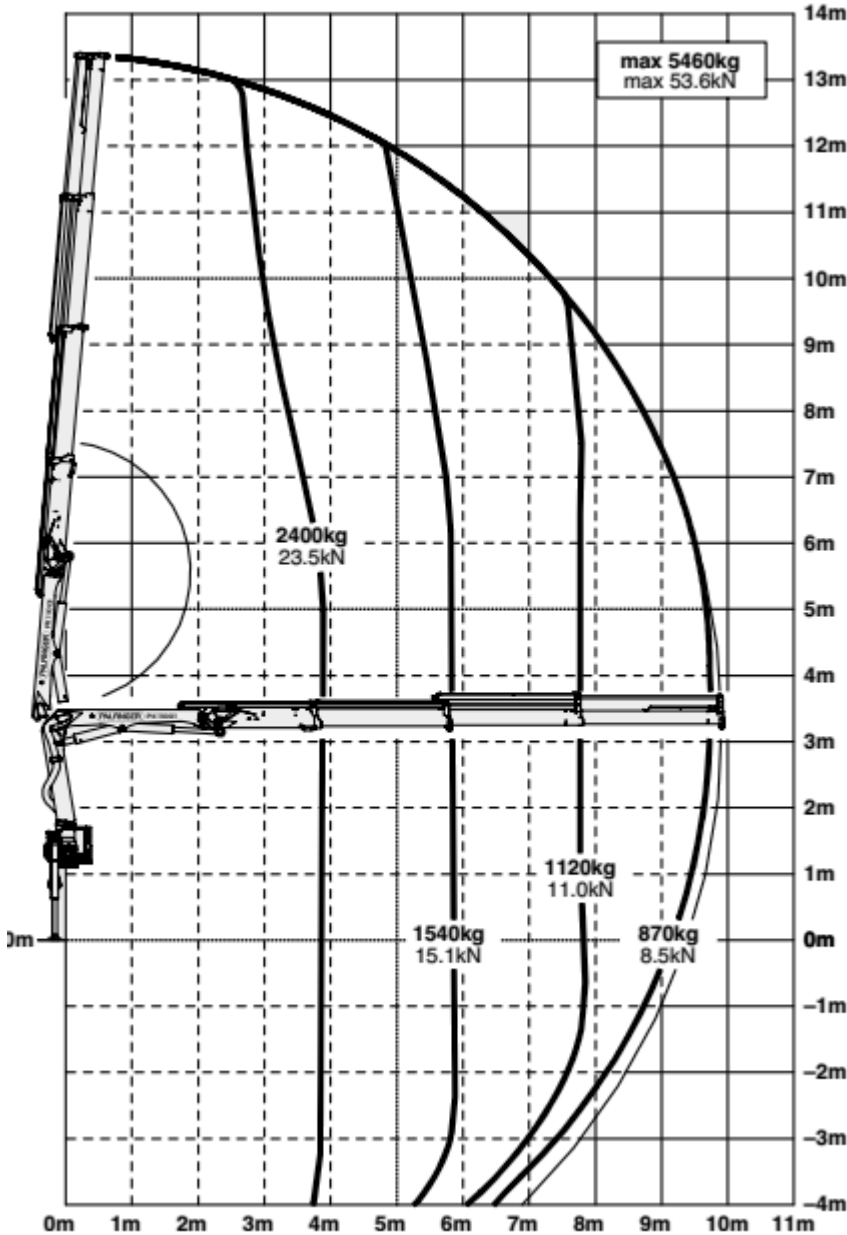
Navigation

Radar/chart plotter: Raymarine C80 c/w, Echosounder: Raystar 125 ST40, VHF: 2 x Icom M411, Handheld VHF: Icom IC-M1, Compass: Plastimo Olympic, Searchlight: ITT Jabsco, AIS: Raymarine AIS650

General Arrangement



Crane Specifications



max.		5460 kg	12040 lbs
3.9 m	12' 10"	2450 kg	5290 lbs
5.8 m	19' 0"	1540 kg	3400 lbs
7.7 m	25' 3"	1120 kg	2470 lbs
9.7 m	31' 10"	870 kg	1920 lbs
11.9 m*	39' 1"	680 kg	1500 lbs
13.9 m*	45' 7"	550 kg	1210 lbs