



# CT Moreton / ASD Harbour Tug

## General

<b>Vessel type:</b>	ASD Harbour Tug
<b>Built:</b>	Imamura Shipbuilding
<b>Year built:</b>	1987
<b>Port of registry:</b>	Liverpool
<b>IMO:</b>	8704274
<b>Call sign:</b>	2BNO7
<b>MMSI:</b>	235089842
<b>Classification:</b>	RINA C* tug; coastal area
<b>Certification:</b>	MCA Workboat Category 2

## Dimensions

<b>Length:</b>	20.60 m
<b>Beam:</b>	8.50 m
<b>Draft:</b>	3.50 m
<b>Gross tonnage:</b>	131

## Tank Capacities

<b>Fuel oil:</b>	20 m3
<b>Fresh water:</b>	35 m3

## Machinery / Performance

<b>Bollard pull:</b>	35 ton
<b>Speed:</b>	11 knots
<b>Main engines:</b>	2 x Niigata 6L25CXE
<b>Total power:</b>	2800 bhp
<b>Propulsion:</b>	2 x Z-peller Azimuth Stern Drive Units
<b>Propellers:</b>	2 x 1860mm 4 bladed
<b>Generator sets:</b>	2 x Yanmar 64 kVA

## Deck Equipment

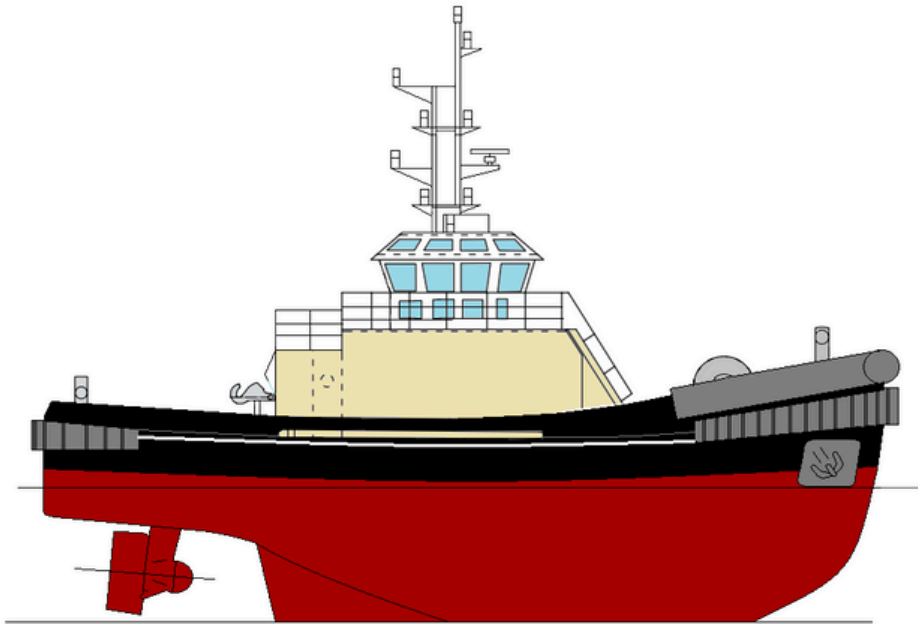
<b>Forward towing winch:</b>	60t BL
<b>Tow line:</b>	64mm polyester

## Navigation

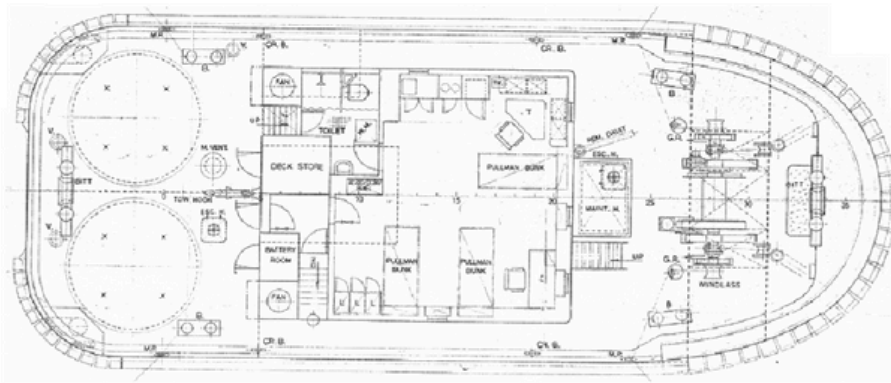
2 x Sailor VHF, Radar: Furuno FR8030D, 12" x 48 miles, Echo Sounder: JRC Colour Echo sounder model, JFV 100M2, Fluxgate Compass, MD53 with dial repeater, Sestrel Minor overhead compass, AIS

## Accommodation

3 x double cabins deck level
------------------------------



**MAIN DECK**



**BELOW DECK**

