



CT Upton / ASD Harbour Tug

General

Vessel type:	ASD Harbour Tug
Built:	Imamura Shipbuilding
Year built:	1987
Port of registry:	Liverpool
IMO:	8704286
Call sign:	2BNP2
MMSI:	35089843
Classification:	
Certification:	MCA Workboat Category 2

Dimensions

Length:	20.60 m
Beam:	8.50 m
Draft:	3.50 m
Gross tonnage:	131

Tank Capacities

Fuel oil:	20 m3
Fresh water:	35 m3

Machinery / Performance

Bollard pull:	35 ton
Speed:	11 knots
Main engines:	2 x Niigata 6L25CXE
Total power:	2800 bhp
Propulsion:	2 x Z-peller Azimuth Stern Drive Units
Propellers:	2 x 1860mm 4 bladed
Generator sets:	1 x Yanmar 64 kVA 1 x Hyundai 112 kVA - Tier III

Deck Equipment

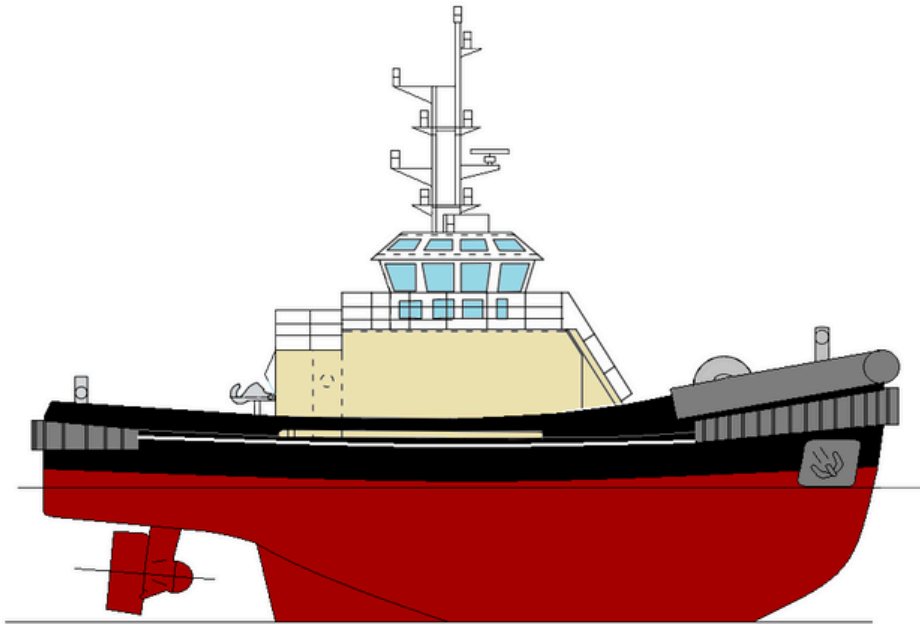
Forward towing winch:	60t BL
Tow line:	64mm polyester

Navigation

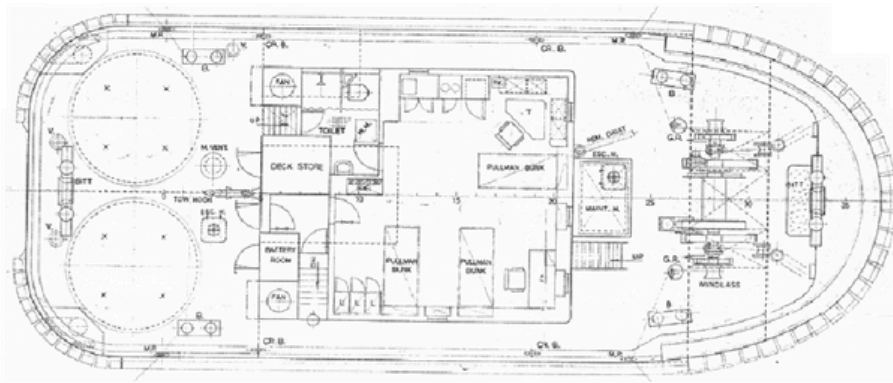
2 x Sailor VHF, Radar: Furuno FR8030D, 12" x 48 miles, Echo Sounder: JRC Colour Echo sounder model, JFV 100M2, Fluxgate Compass, MD53 with dial repeater, Sestrel Minor overhead compass, AIS

Accommodation

3 x double cabins deck level



MAIN DECK



BELOW DECK

