



# Vixen / Road Transportable Workboat

## General

<b>Vessel type:</b>	Meercat RT15
<b>Built:</b>	Meercat Workboats
<b>Year built:</b>	2011
<b>Port of registry:</b>	Liverpool
<b>MMSI</b>	235083169
<b>Call sign:</b>	MGZL8
<b>Certification:</b>	MCA Workboat Category 2

## Dimensions

<b>Length:</b>	14.50 m
<b>Beam:</b>	4.85 m
<b>Draft:</b>	0.80 m
<b>Gross tonnage:</b>	16.30
<b>Deck strength:</b>	7.5 t/m <sup>2</sup>
<b>Deck loading capacity:</b>	19 t
<b>Clear deck space:</b>	40 m <sup>3</sup>

## Tank Capacities

<b>Fuel oil:</b>	3,000 l
<b>Fresh water:</b>	215 l

## Machinery / Performance

<b>Bollard pull:</b>	3 ton (approx.)
<b>Speed:</b>	7 knots
<b>Main engines:</b>	2 x Doosan L136
<b>Total power:</b>	320 bhp
<b>Propellers:</b>	2 x 4 blade 700 mm
<b>Generator sets:</b>	1 x Cummins Onan 9.5 kVA
<b>Electrical system:</b>	24v DC and 220v shore connection

## Deck Equipment

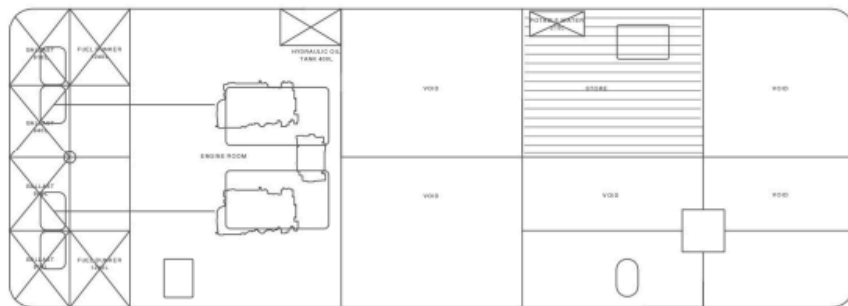
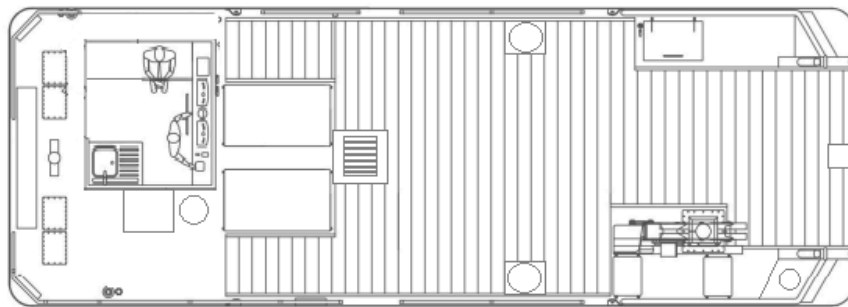
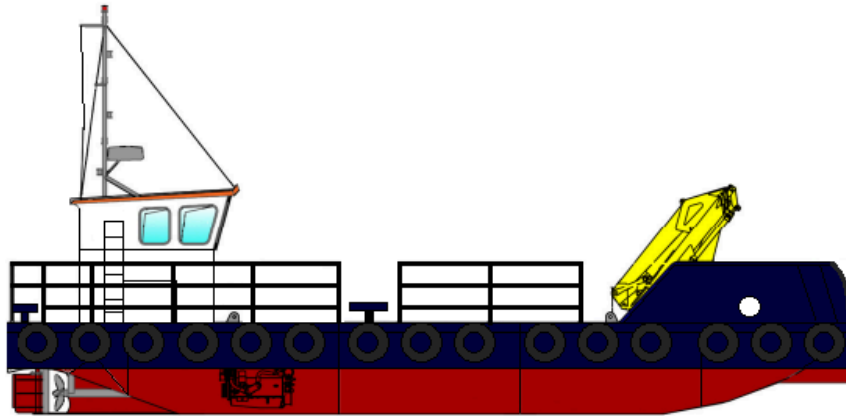
<b>Deck crane:</b>	Palfinger PK11001 (810kg @ 9.9m)
<b>Deck winch:</b>	2.5t SWL
<b>Capstan:</b>	1.5t SWL
<b>Spud legs:</b>	2 x 8m x 400mm

## Navigation

Radar/chart plotter: Raymarine C80 c/w, Echosounder: Raystar 125 ST40, VHF: 2 x Icom M411, Handheld VHF: Icom IC-M1, Compass: Plastimo Olympic, Searchlight: ITT Jabsco, AIS: Raymarine AIS650

## Accommodation

Day operations only



Scale

